



# UHRS & UHCM

Premier Unit Heaters

## UHRS

Residential Unit Heaters



### Application & Features:

- Residential – low profile units.
- Great for garages & shops.
- Sidewall venting eliminates roof penetrations.
- Wiring junction box is located inside of unit.
- 1" clearance from ceiling for easy installation.
- Heating capacities from 30,000 – 105,000 BTUH.
- Up to 85% thermal efficiency.
- Self-diagnostic board with LED display improves troubleshooting.
- Power exhaust system allows horizontal venting to 25 ft.
- Tubular heat exchangers made of aluminized steel.
- Aluminized steel in shot burners provide efficient trouble free operation.
- Direct drive propeller fans are dynamically balanced for quiet and smooth operation.

## UHCM

Commercial Unit Heaters



### Application & Features:

- Heating capacities from 125,000 – 400,000 BTUH.
- Up to 85% thermal efficiency.
- Stainless steel heat exchanger is available for longer product life.
- Heat exchangers are laboratory life-cycle tested.
- Tubular heat exchangers made of aluminized steel or stainless steel.
- Aluminized steel in shot burners provide efficient trouble free operation.
- Sidewall venting eliminates roof penetrations.
- Wiring junction box is located outside of unit.
- Safe direct spark ignition. No standing pilot light.
- Self-diagnostic board with LED display improves troubleshooting efficiency and accuracy.
- 3/8 x 16 rivet nuts are located on the top of cabinet for suspending unit using threaded rod.
- Power exhaust system with a sealed flue collector allows conventional vertical or horizontal venting to 35 ft. (depends on unit size).
- Direct drive propeller fans are dynamically balanced for quiet, smooth operation.

Direct drive propeller fans are dynamically balanced for quiet and smooth operation



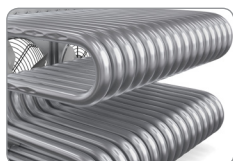
Power exhaust system allows vertical or horizontal venting



Direct Spark Igniter improving operation and efficiency



Patented Tubular Heat Exchanger provides resistance to corrosion and oxidation



DSI Control Board designed for easy servicing



Hinged Access Door for easy servicing

