



# EVAPORATOR COIL PRODUCT GUIDE



[ADPNOW.COM](http://ADPNOW.COM)



04	WHY ADP	16	PLENUM COIL - PL SERIES
		16	Description
05	THE ADP ADVANTAGE	17	Nomenclature
06	EVAPORATOR COIL APPLICATION	18	HORIZONTAL SIDE CONNECTION HD SERIES
		18	Description
07	FLEXCOIL A2L	19	Nomenclature
08	EVAPORATOR COIL PRODUCT OFFERING	20	HORIZONTAL SLAB HH SERIES
		20	Description
09	EVAPORATOR COIL PRODUCT COMPARISON	21	Nomenclature
10	MULTI-POSITION - HE SERIES	22	MANUFACTURED HOME M SERIES
10	Description	22	Description
11	Nomenclature	23	Nomenclature
12	DEDICATED DOWNFLOW	24	SERVICE COILS
12	Description	24	Description
13	Nomenclature	25	Nomenclature
14	HORIZONTAL TOP CONNECTION - V SERIES	26	NOTES
14	Description		
15	Nomenclature		



## WHY ADP?

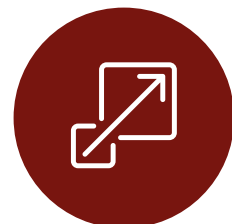
Advanced Distributor Products (ADP) started with a vision to produce the best evaporator coils in the country. In 1992, ADP began production in Grenada, Mississippi, and started developing innovative products that are fully supported by a research and development laboratory, which includes areas for testing, assembling, and designing future products.

Today, ADP offers a wide range of premier HVAC products with exclusive design advantages. We pride ourselves on our quality, flexibility, and solutions. We design our products to fit any application and simplify installation. And we're always open to new partnerships with businesses and the communities we serve.



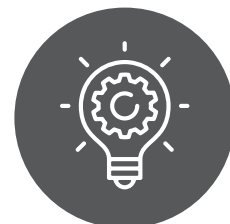
### QUALITY

- Leading US manufacturer of evaporator coils and air handlers
- Built to the highest quality standards
- Microban® antimicrobial technology
- Advanced performance testing simulation software



### FLEXIBILITY

- Broadest product line in the industry – thousands of variations available
- Products designed to match perfectly with any system
- Personalized programs for distributor partners
- Custom product strategies to meet local needs



### SOLUTIONS

- Short lead times
- Low warranty rates with simple claim process
- Insights from industry experts
- Focused on distributor and dealer success
- Quick and easy installation in the field

## THE ADP ADVANTAGE

There's a reason ADP is the #1 producer of evaporator coils in the USA. Our coils are designed to match perfectly with any system, excelling in appearance and performance. And our coil line can accommodate any application need.

### ALL ADP EVAPORATOR COILS OFFER



Innovative and efficient designs that maintain a minimal footprint



Installation flexibility and efficiency



Increased system performance



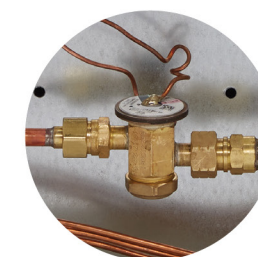
Available 10-year extended warranty with registration



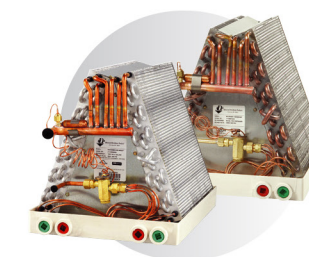
Out-of-the-box installation



Industry-exclusive Microban® anti-microbial product protection on every Healthy Solutions® coil



Factory installed TXV's with bolt on connections



Both copper and aluminum coils available





# EVAPORATOR COIL APPLICATION

An evaporator coil plays a crucial role in the operation of an air conditioner or heat pump by gently drawing warmth from the air within the home. It's positioned within the air handler or connected to the furnace.

Nestled within the blower compartment or air handler, the evaporator coil serves as a reservoir for the cooled refrigerant that the compressor sends its way. As the blower fan guides air over the coil, the refrigerant's chilly temperature effectively extracts heat from your indoor air, leaving you with a more comfortable environment. Subsequently, the refrigerant, now carrying the warmth it collected, embarks on a journey to the outdoor condenser coil. In the case of a heat pump, this process takes on a role reversal during winter. Here, the evaporator coil releases heat from the refrigerant into your home, counteracting the chill instead of sending it outside.

In this way, the evaporator coil silently contributes to the coziness of your living spaces while also being versatile enough to adapt to seasonal variations in temperature.



# FLEX COIL

## WHAT IS FLEXCOIL?

FlexCoil is ADP's A2L solution that works with both R-32 and R-454B. ADP's FlexCoil is designed to help HVAC distributors and dealers succeed during this year's refrigerant transition.

## WHAT MAKES FLEXCOIL THE RIGHT CHOICE?



### Flexibility for distributors

- **Maximizes inventory flexibility:** The same coil can be used for R-32 or R-454B with just a metering device change



### Easy installation for dealers

- Provides a full line of coils certified for both A2L refrigerants
- Field or factory-installed Refrigerant Detection System (RDS)
  - Single RDS with dual-calibrated sensor for both R-32 and R-454B
  - Field RDS offers one kit with everything needed to make an easy refrigerant change
- All ADP FlexCoil products come with the sensor bracket preinstalled in the approved location and have mechanical fit connections to install or change the metering device, such as a TXV

## WHEN WILL FLEXCOIL BE AVAILABLE?

FlexCoil is available now! Contact your ADP sales representative for more details.

Factory Refrigerant	Factory RDS
R-32	Yes
R-32	No
R-454B	Yes
R-454B	No

Field TXVs	Field RDS
R-32	Dual: R-32 & R-454B
R-454B	



Scan to learn more about ADP's FlexCoil





# EVAPORATOR COIL PRODUCT OFFERING

FlexCoil A2L + Legacy A1 models available

## Multi-Position & Dedicated Downflow

HE & Dedicated Downflow Series

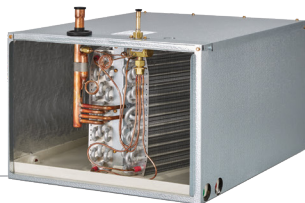
Lower heights and variable widths for a perfect furnace fit



## Horizontal Top Connection

V Series

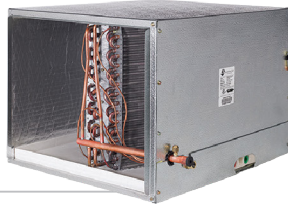
Dedicated horizontal coils offer strategic attic solutions over standard MP coils



## Horizontal Side Connection

HD Series

Dedicated horizontal coils offering the perfection solution for crawl spaces



## Plenum Coil

PL Series

Dedicated horizontal coil with an integrated plenum for fast installation



## Horizontal Slab

HH Series

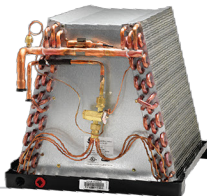
Dedicated horizontal slab coils great for replacement of legacy applications



## Manufactured Housing

M Series

Mobile home applications with sized out down-turned headers for easy line brazing



## Service Coils

SC Series

Service coils offering the perfect replacement for 8-12 SEER coils



# EVAPORATOR COIL PRODUCT COMPARISON

							
Series	HE Series	Downflow	V Series	HD Series	PL Series	M Series	HH Series
DESCRIPTION	Multi-Position	Dedicated Downflow	Horizontal Coil	Horizontal Coil	Horizontal Coil	Manufactured House	Horizontal Coil
FLEXCOIL							
R-32	✓	✓	✓	✓	✓	✓	✓
R-454B	✓	✓	✓	✓	✓	✓	✓
R-410A	✓	✓	✓	✓	✓	✓	✓
WARRANTY							
Extended Warranty Available	✓	✓	✓	✓	✓	✓	✓
COIL FEATURES							
Aluminum Coil	✓	✓	✓		✓	✓	
Copper Coil	✓	✓	✓	✓		✓	✓
APPLICATION							
Vertical Upflow/Downflow*	✓	✓ Down-flow				✓	
Horizontal Right/Left	✓		✓	✓	✓		✓
AC/HP	✓	✓	✓	✓	✓	✓	✓
Cased	✓	✓	✓	✓	✓		✓
Uncased	✓					✓	
CABINET							
Embossed	✓	✓	✓	✓	✓		✓
Painted	✓		✓	✓			
DRAIN PAN							
Microban® Antimicrobial	✓	✓	✓	✓	✓		✓
UV Resistant	✓	✓	✓	✓	✓		✓
Sloped Design	✓	✓	✓		✓	✓	
METERING							
Piston	✓	✓	✓	✓	✓	✓	✓
TXV	✓	✓	✓	✓	✓	✓	✓

✓ Available factory installed

★ Downflow application only available with specific slab & airflow. See Spec Guide for more information.

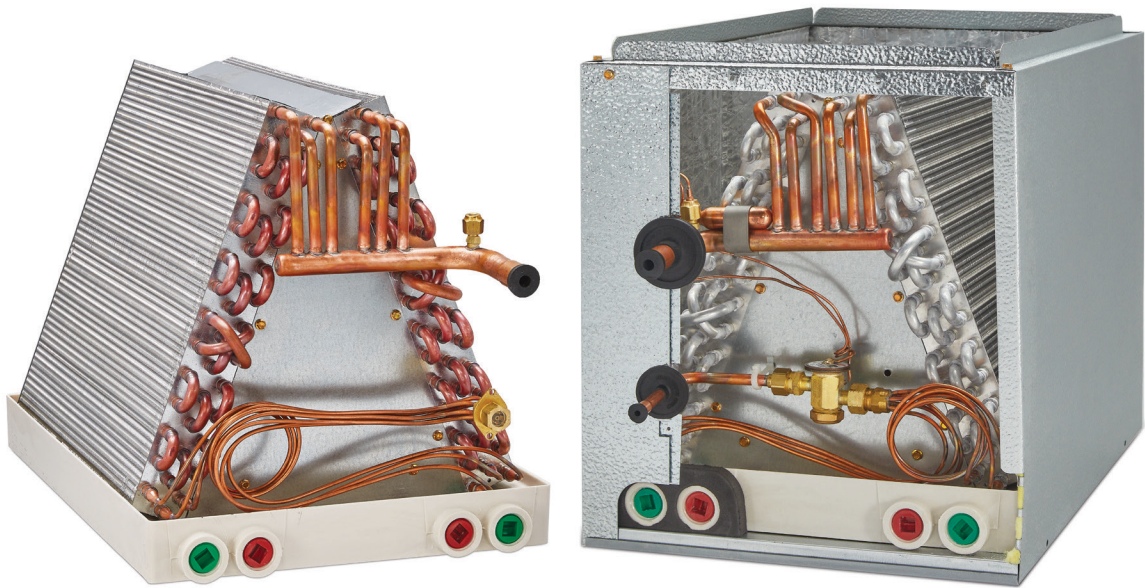
**5-YEAR**  
LIMITED PARTS  
WARRANTY STANDARD

AVAILABLE  
**10-YEAR**  
EXTENDED WARRANTY WITH REGISTRATION

SCAN THIS CODE TO REGISTER  
FOR OUR 10-YEAR WARRANTY.

FLEXCOIL A2L &  
LEGACY A1 MODELS

Scan the QR code  
to learn more



Lower heights and variable widths for a perfect furnace fit

Cased, uncased, multi-position and upflow/downflow configurations

Built-in plenum flanges with rounded corners for fast and safe installation

Front panel with only four screw access and non-captive refrigerant lines for fast and easy coil access

Available in copper or aluminum

Painted cabinet options for furnace color coordination

Improved Air Quality

Microbes can double every 20 minutes on an untreated surface!



Standard plastic  
pan with visible  
mold

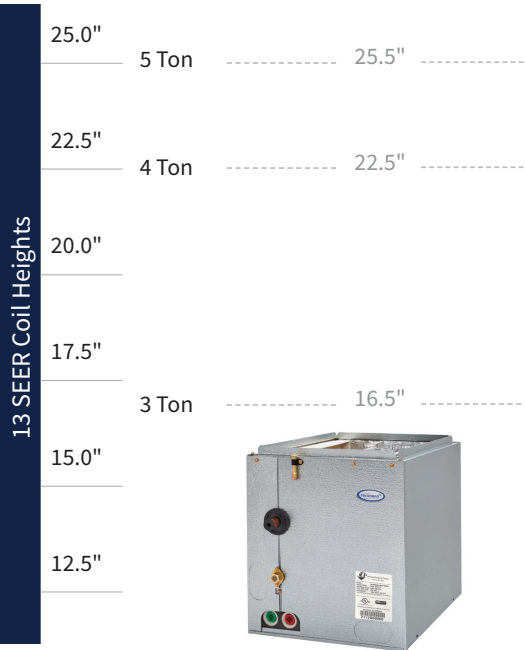


Plastic pan  
with Microban®  
antimicrobial  
additive

Mold is part of our environment and there are no practical ways to completely eliminate mold spores. The best defense against mold in a home is to prevent it from taking hold through moisture control and the use of mold resistant building materials.

Lower Height

ADP provides space saving opportunities and a perfect fit with your furnace!



Nomenclature

H	G30	9	24	D	145	B	12	05	S
Cabinet Color	Slab No.	Metering Device	Nominal MBTUH	Cabinet Depth	Width	Cabinet Upper Notch	Cabinet Height	Configuration	Service Coil
H: Embossed A: Armstrong D: Ducane/Aire-Flo G: ICP J: Goodman/Amana N: Nordyne P: Carrier/Bryant/Payne R: Rheem/Ruud T: Trane/American Standard Y: York/Luxaire Coleman	E&A: Copper slab G: Aluminum slab	1: Piston (R-410A) 7: Bleed HP-A/C TXV (R-410A) 9: Non-Bleed HP-A/C TXV (R-410A)		Core/Non-Core: Based on color, see below A: Uncased C: 20.5" D: 21.0" E: 21.5"	Cased 140: 14.0" 142: 14.25" 145: 14.5" 175: 17.5" 210: 21.0" 245: 24.5" Uncased 130: 13.0" 140: 14.0" 155: 15.5" 170: 17.0" 200: 20.0" 235: 23.5"	A: Uncased B: 0.75" (Standard)	00: Uncased 12: 12.5" 16: 16.5" 18: 18.5" (up to 31.5")	00: Right-hand uncased 01: Right-hand cased 04: Left-hand uncased 05: Left-hand cased 20: Right-hand cased multi-position 22: Left-hand cased multi-position	

H	G32	A	24	D	145	B	16	05	R
Cabinet Color	Slab No.	Metering Device	Nominal MBTUH	Cabinet Depth	Width	Cabinet Upper Notch	Cabinet Height	Configuration	Refrigerant Detection System
H: Embossed A: Armstrong G: ICP J: Goodman/Amana N: Nordyne P: Carrier/Bryant/Payne R: Rheem/Ruud T: Trane/American Standard Y: York/Luxaire Coleman	E & A: Copper slab G: Aluminum slab	1: Piston (R-454B & R-32) A: R-454B Non-Bleed HP-A/C TXV B: R-32 Non-Bleed HP-A/C TXV C: R-454B Bleed HP-A/C TXV		Core/Non-Core: Based on color, see below A: Uncased C: 20.5" D: 21.0" E: 21.5"	Cased 140: 14.0" 142: 14.25" 145: 14.5" 175: 17.5" 210: 21.0" 245: 24.5" Uncased 130: 13.0" 140: 14.0" 155: 15.5" 170: 17.0" 200: 20.0" 235: 23.5"	A: Uncased B: 0.75" (Standard)	00: Uncased 12: 12.5" 16: 16.5" 18: 18.5" (up to 31.5")	00: Right-hand uncased 01: Right-hand cased 04: Left-hand uncased 05: Left-hand cased 20: Right-hand cased multi-position 22: Left-hand cased multi-position	R: RDS Controller & Sensor (Factory Installed) L: Leak Detection Sensor (Factory Installed) N: Not Included (Field Installed)

\* See Spec Guide for additional nomenclature details



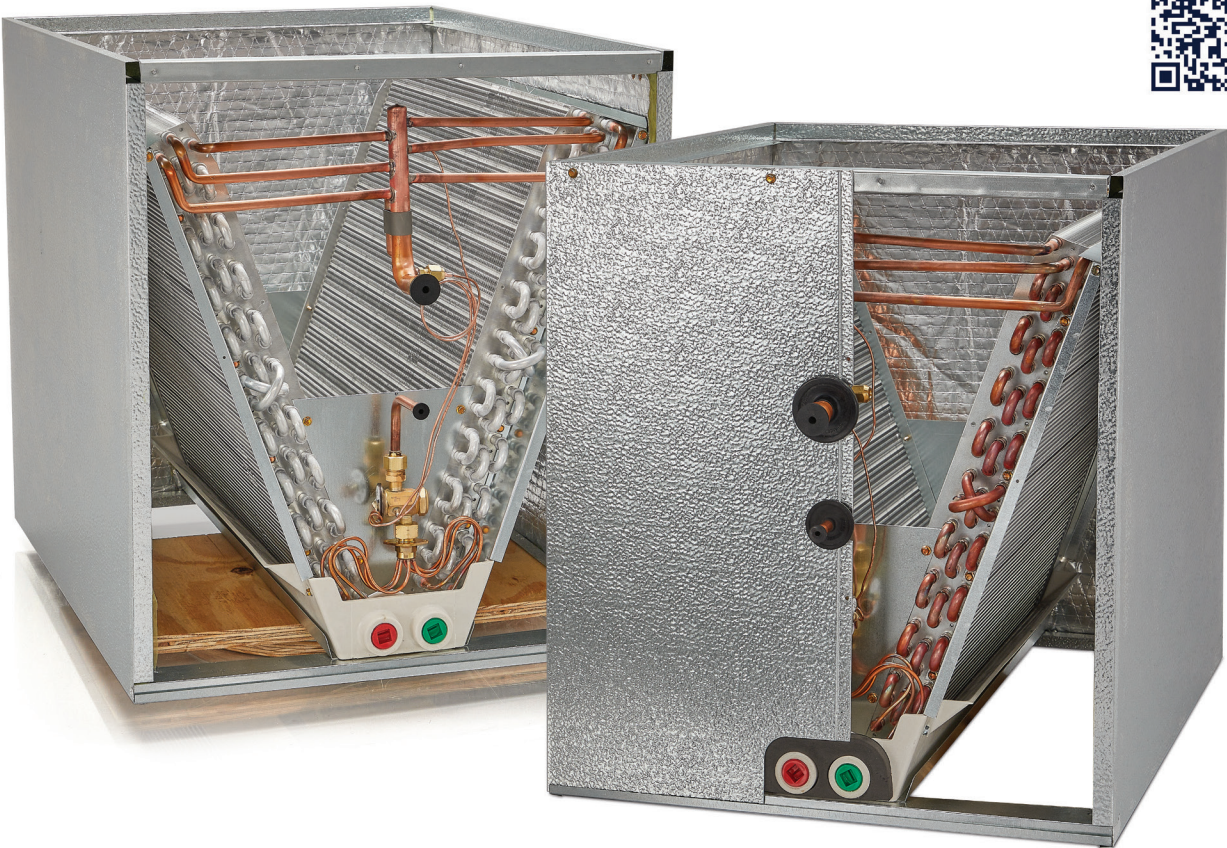


# DEDICATED DOWNFLOW



## FLEXCOIL A2L & LEGACY A1 MODELS

Scan the QR code to learn more



Short height to fit constrained spaces

Fits furnace with no additional support needed

Better air flow for higher performance versus N-coil

Out-of-the-box reliable downflow solution and no kit needed

Front panel with only six screws for fast and easy coil access; non-captive refrigerant lines

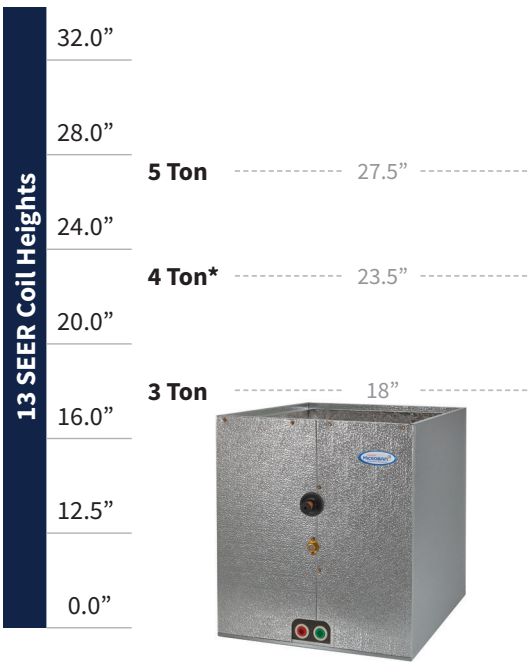
## Perfect Fit

- Full depth cabinet for a sturdy installation
- Perfect width fit for a cleaner design
- Braced cabinet for added strength



## Short Height

- Fits in height constrained spaces
- Space savings opportunities



\* See spec guide for available models

## Nomenclature

A	24	VAC	H	X	R	17	D	S
Series	Nominal (MBTUH)	Slab Number	Metering Device	Cabinet Color	Cabinet Depth	Cabinet Width	Configuration	Service Coil
A: Vertical		VAC, VBC. VCC, etc. : Copper Slab VAA, VBA. VCA, etc. : Aluminum Slab	A: Piston (R-410A) w/ Access Port H: Non-bleed HP-A/C TXV (R-410A)	X: Embossed	R: 26.5"	14: 14.5" 17: 17.5" 21: 21.0" 24: 24.5"	D: Downflow	

A	24	VAC	A	X	R	17	D	R
Series	Nominal (MBTUH)	Slab Number	Refrigerant Type & Metering Device (Field Configurable)	Cabinet Color	Cabinet Depth	Cabinet Width	Configuration	Refrigerant Detection System (Field Configurable)
A: Vertical		VAC, VBC. VCC, etc. : Copper Slab VAA, VBA. VCA, etc. : Aluminum Slab	1: Piston (R-454B & R-32) A: R-454B Non-bleed HP-A/C TXV B: R-32 Non-bleed HP-A/C TXV C: R-454B Bleed HP-A/C TXV	X: Embossed	R: 26.5"	14: 14.5" 17: 17.5" 21: 21.0" 24: 24.5"	D: Downflow	R: RDS Controller & Sensor (Factory Installed) L: Leak Detection Sensor (Factory Installed) N: Not Included (Field Installed)

\* See Spec Guide for additional nomenclature details

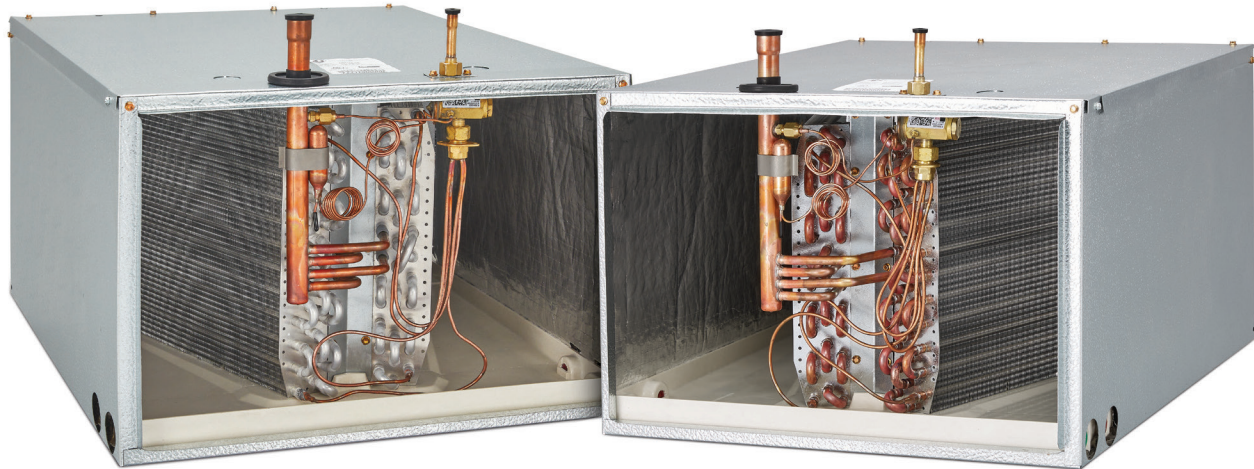


# HORIZONTAL TOP CONNECTION - V SERIES



## FLEXCOIL A2L & LEGACY A1 MODELS

Scan the QR code to learn more



Dedicated horizontal coils offer strategic attic solutions over standard MP coils

Top refrigerant connections eliminating counter flow and line re-routing

Dual condensate drains on each side for additional installation flexibility

Top panel with only four screws for fast and easy coil access

Available in copper or aluminum

Painted cabinet options for furnace color coordination

## Improved Air Quality

Microbes can double every 20 minutes on an untreated surface!



Standard plastic pan with visible mold



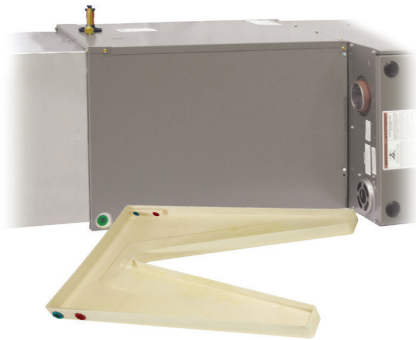
Plastic pan with Microban® antimicrobial additive

Mold is part of our environment and there are no practical ways to completely eliminate mold spores.

The best defense against mold in a home is to prevent it from taking hold through moisture control and the use of mold resistant building materials.

## Perfect Attic Solution

Dedicated horizontal coils offer a quality advantage over standard multi-position coils!



### Perfect Furnace Fit

Coil height matches furnace width, no adapter required

### 5 Ton Attic Access

21" solution easily passes through 22" attic opening

### Top Refrigerant Connections

Eliminates counter flow and line re-routing

## Nomenclature

V	24	H	145	D12	9	S
Cabinet Color	Nominal MBTUH	Coil Type	Cabinet Height	Slab Number	Metering Device	Service Coil
V: Embossed A: Armstrong C: Carrier/Bryant/Payne D: Ducane/Aire-Flo G: ICP J: Goodman/Amana N: Nordyne R: Rheem/Ruud T: Trane/American Standard Y: York/Luxaire/Coleman		H: Horizontal A-Coil	145: 14.5" 175: 17.5" 210: 21.0" 245: 24.5" 252: 25.25"	D: Copper Slab P: Aluminum Slab	1: Piston (R-410A) 7: Bleed HP-A/C TXV (R-410A) 9: Non-Bleed HP-A/C TXV (R-410A)	

V	24	H	145	D12	A	R
Cabinet Color	Nominal MBTUH	Coil Type	Cabinet Height	Slab Number	Refrigerant Type & Metering Device	Refrigerant Detection System (Field Configurable)
V: Embossed A: Armstrong C: Carrier/Bryant/Payne G: ICP J: Goodman/Amana N: Nordyne R: Rheem/Ruud T: Trane/American Standard Y: York/Luxaire/Coleman		H: Horizontal A-Coil	145: 14.5" 175: 17.5" 210: 21.0" 245: 24.5" 252: 25.5"	D: Copper Slab P: Aluminum Slab	1: Piston (R-454B & R-32) A: Non-Bleed HP-A/C TXV (R-454B) B: Non-Bleed HP-A/C TXV (R-32) C: Bleed HP-A/C TXV (R-454B)	R: RDS Controller & Sensor (Factory Installed)" L: Leak Detection Sensor (Factory Installed) N: Not Included (Field Installed)

\* See Spec Guide for additional nomenclature details



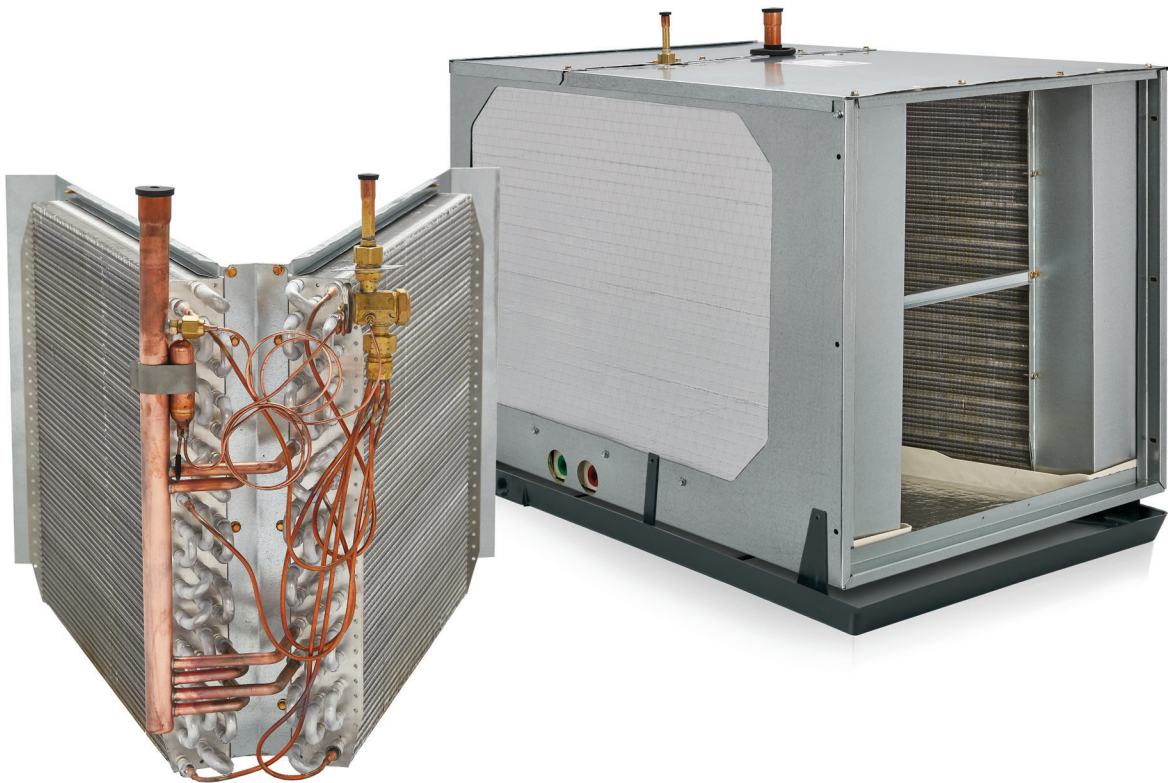


# PLENUM COIL - PL SERIES



## FLEXCOIL A2L & LEGACY A1 MODELS

Scan the QR code to learn more



Dedicated horizontal coil with Integrated plenum for fast installation

Built-in handle allows for easy lifting through tight spaces, such as an attic

Top refrigerant connections and dual condensate drains for installation flexibility

Top panel with only four screw access and UV light knockouts for installation flexibility

Pilot holes for fast secondary drain pan attachment

## Improved Air Quality

Microbes can double every 20 minutes on an untreated surface!



Standard plastic pan with visible mold



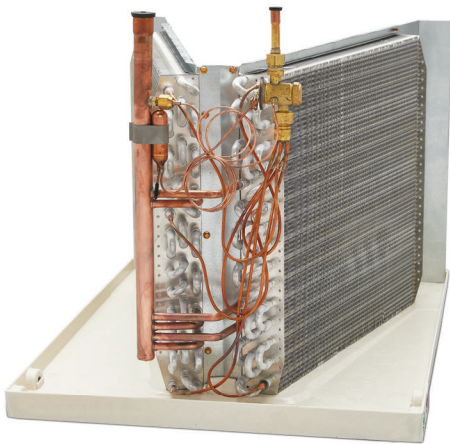
Plastic pan with Microban® antimicrobial additive

Mold is part of our environment and there are no practical ways to completely eliminate mold spores.

The best defense against mold in a home is to prevent it from taking hold through moisture control and the use of mold resistant building materials.

## All-in-One Solution

ADP provides a light weight plenum coil solution with premier features and benefits!



### Mobility

Light weight aluminum evaporator coils with aluminum header plates

### Attic Access

Built-in handle allows easy lifting through tight spaces

### Top Refrigerant Connections

Eliminates counter flow and line re-routing

## Nomenclature

P	L	24	H	145	P12	9	35	S
Cabinet Type	Cabinet Color	Nominal MBTUH	Coil Type	Coil Height	Slab Number	Metering Device	Cabinet Length	Service Coil
P: Plenum	L: Galvanized		H: Horizontal Coil	145 : 14.5" 175 : 17.5" 210 : 21.0" 245 : 24.5"	P13 P14 P16 etc.	1: Piston (R-410A) 7: Bleed HP-A/C TXV (R-410A) 9: Non-Bleed HP-A/C TXV (R-410A)	35 40	

PL	24	H	145	P12	A	35	N
Cabinet Type	Nominal MBTUH	Coil Type	Cabinet Height	Slab Number	Refrigerant Type & Metering Device (Field Configurable)	Cabinet Length	Refrigerant Detection System (Field Configurable)
PL: Plenum		H: Horizontal A-Coil	145 : 14.5" 175 : 17.5" 210 : 21.0" 245 : 24.5"	P13 P14 P16 etc.	1: Piston (R-45B & R-32) A: R-454B Non-bleed HP-A/C TXV B: R-32 Non-bleed HP-A/C TXV C: R-454B Bleed HP-A/C TXV	35 40	R: RDS Controller & Sensor (Factory Installed) L: Leak Detection Sensor (Factory Installed) N: Not Included (Field Installed)

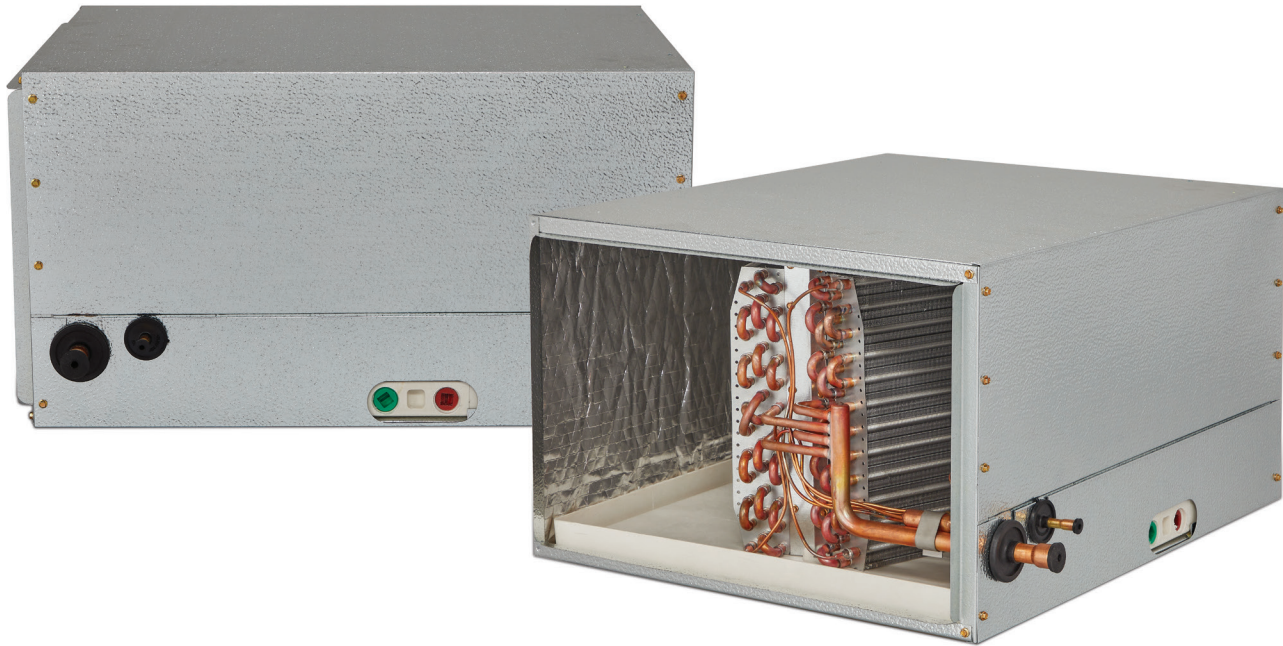
\* See Spec Guide for additional nomenclature details

# HORIZONTAL SIDE CONNECTION - HD SERIES



## FLEXCOIL A2L & LEGACY A1 MODELS

Scan the QR code to learn more



Dedicated horizontal coils offering the perfection solution for crawl spaces

Counterflow capable to meet any airflow direction

Side refrigerant connections for easy access to coil

Built-in plenum flanges with rounded corners for fast and safe installation

Available in copper or aluminum

## Improved Air Quality

Microbes can double every 20 minutes on an untreated surface!



Standard plastic pan with visible mold



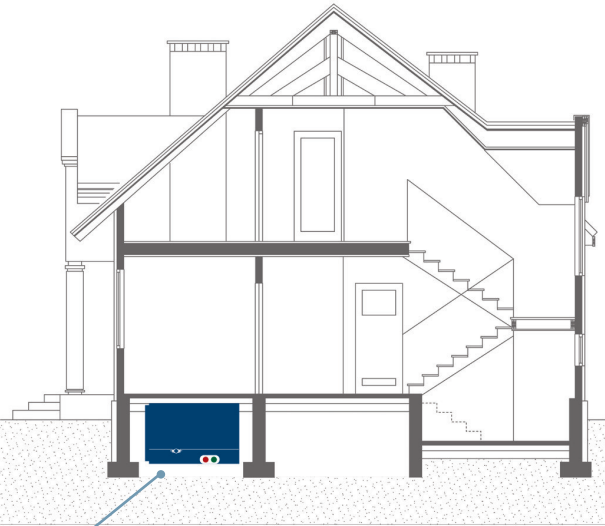
Plastic pan with Microban® antimicrobial additive

Mold is part of our environment and there are no practical ways to completely eliminate mold spores.

The best defense against mold in a home is to prevent it from taking hold through moisture control and the use of mold resistant building materials.

## Crawl Space Solutions

Dedicated horizontal with side refrigerant connections are perfect for crawl space application!



**Low Height**  
Perfect for crawl space under houses

**Side Refrigerant Connections**  
Easy to access coil

## Nomenclature

H	D02	1	24	E	145	B	21	47	S
Cabinet Color	Slab Number	Metering Device	Nominal MBTUH	Cabinet Width	Cabinet Height	Duct Flange	Cabinet Length	Product Code	Service Coil
H: Embossed A: Armstrong C: Carrier/Bryant/Payne G: ICP J: Goodman/Amana N: Nordyne R: Rheem/Ruud T: Trane/American Std Y: York/Luxaire/Coleman	D: Copper Slab P: Aluminum Slab	1: Piston (R-410A) 7: Bleed HP-A/C TXV (R-410A) 9: Non-bleed HP-A/C TXV (R-410A)		E: 21.5" (Standard)	145: 14.5" 175: 17.5" 210: 21.0" 245: 24.5"	B: 0.75" (Standard)	21: 21.5" 26: 26.5" 31: 31.5"	47: Side refrigerant connections	

H	D12	A	24	E	145	B	21	47	R
Cabinet Color	Slab Number	Metering Device	Nominal MBTUH	Cabinet Width	Cabinet Height	Duct Flange	Cabinet Length	Product Code	Refrigerant Detection System (Field Configurable)
H: Embossed A: Armstrong C: Carrier/Bryant/Payne G: ICP J: Goodman/Amana N: Nordyne R: Rheem/Ruud T: Trane/American Std Y: York/Luxaire/Coleman	D: Copper Slab P: Aluminum Slab	1: Piston (R-410A) A: R-454B Non-bleed HP-A/C TXV B: R-32 Non-bleed HP-A/C TXV C: R-454B Bleed HP-A/C TXV		E: 21.5" (Standard)	145: 14.5" 175: 17.5" 210: 21.0" 245: 24.5"	B: 0.75" (Standard)	21: 21.5" 26: 26.5" 31: 31.5"	47: Side refrigerant connections	R: Included (Factory Installed) L: Leak Detection Sensor (Factory Installed) N: Not Included (Field Installed)

\* See Spec Guide for additional nomenclature details





# HORIZONTAL SLAB - HH SERIES



## FLEXCOIL A2L & LEGACY A1 MODELS



Scan the QR code to learn more



## Improved Air Quality

Microbes can double every 20 minutes on an untreated surface!



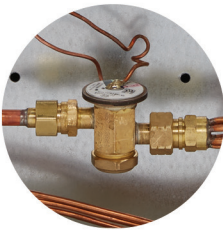
Standard plastic pan with visible mold



Plastic pan with Microban® antimicrobial additive

Mold is part of our environment and there are no practical ways to completely eliminate mold spores.

The best defense against mold in a home is to prevent it from taking hold through moisture control and the use of mold resistant building materials.



Factory installed TXV's with bolt on connections

## Nomenclature

H	H57	1	24	A	185	A	21	02	S
Cabinet Color	Slab Number	Metering Device	Nominal MBTUH	Cabinet Depth	Cabinet Opening	Airflow	Cabinet Height	Product Code	Service Coil
H: Embossed		1: Piston (R410A) 7: Bleed HP-A/C TXV (R-410A) 9: Non-bleed HP-A/C TXV (R-410A)		A: 10"	185: 18 5/8" 225: 22 5/8" 265: 26 5/8" 305: 30 5/8" 365: 36 5/8" 425: 42 5/8"	A: Bi-directional airflow	21: 21 1/4"	02: Cased "H"	

H	H57	A	24	A	185	A	21	02	R
Cabinet Color	Slab Number	Refrigerant Type & Metering Device (Field Configurable)	Nominal MBTUH	Cabinet Depth	Cabinet Opening	Airflow	Cabinet Height	Product Code	Refrigerant Detection System (Field Configurable)
H: Embossed		1: Piston (R-454B & R-32) A: R-454B Non-bleed HP-A/C TXV B: R-32 Non-bleed HP-A/C TXV C: R-454B Bleed HP-A/C TXV		A: 10"	185: 18 5/8" 225: 22 5/8" 265: 26 5/8" 305: 30 5/8" 365: 36 5/8" 425: 36 5/8"	A: Bi-directional airflow	21: 21 1/4"	02: Cased "H"	R: Included (Factory Installed) L: Leak Detection Sensor (Factory Installed) N: Not Included (Field Installed)

\* See Spec Guide for additional nomenclature details

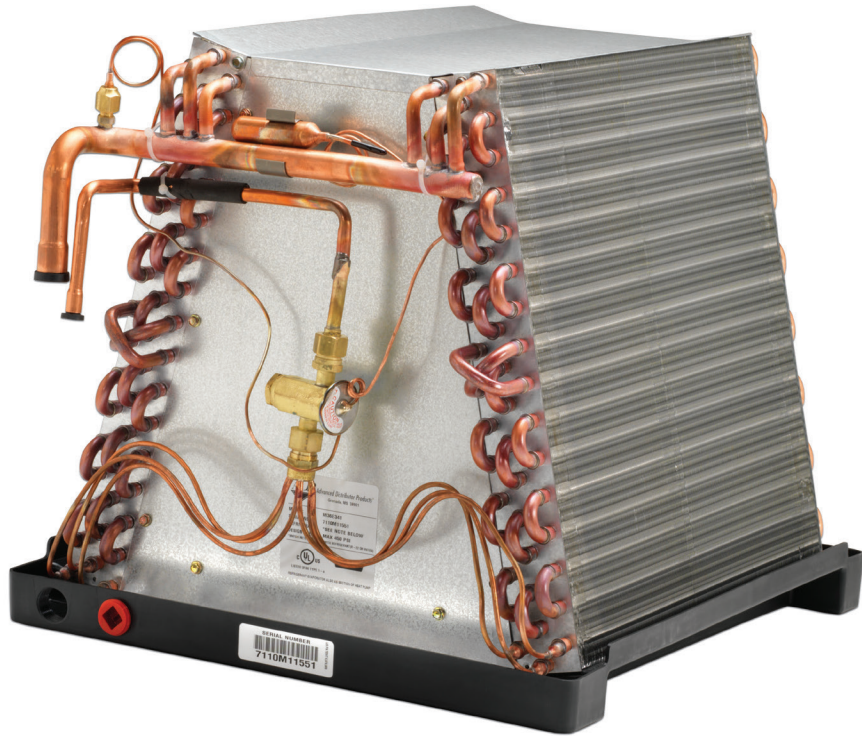
Great for replacement of legacy applications

Dedicated Horizontal slab coils

Bi-directional airflow for installation flexibility

Available with piston or TXV factory installed

FLEXCOIL A2L &  
LEGACY A1 MODELS



Scan the QR code  
to learn more



Blow-off Protection & Improved Air Quality

ADP provides enhanced protection to prevent condensate blow-off and improve overall air quality. Our manufactured housing evaporator coils are designed to remove unhealthy standing water from the drain pan.



**Reduce Condensate Blow-off**  
Specially designed downflow drain pan for added protection

**Reduced Installation Time**  
Drip shield molded into pan, no installation required

**Sloped Drain Pan**  
Superior drainage versus standard manufactured housing coils

**Moisture Control**  
Reduced opportunities for growth of mold and bacteria due to standing water

Designed for manufactured housing applications - Works perfectly with our mFurnace manufactured housing electric furnace
Filter friendly top plate
Sized out down-turned headers for easy line brazing
Coils charged with dry air for greater flexibility with both A1 and A2L applications
Low water retention drain pan design with built-in downflow drip shields

Nomenclature

M	24	E32	9	S
Series	Nominal (MBTUH)	Slab Number	Metering Device	Service Coil
M: Manufactured Housing (Uncased)		E30 E31 etc.	1: Piston (R-410A) w/ Access Port 7: Bleed H/P TXV (R-410A) 9: Non-bleed H/P TXV (R-410A)	

M	24	E32	A	R
Series	Nominal (MBTUH)	Slab Number	Metering Device	Refrigerant Detection System (Field Configurable)
M: Manufactured Housing (Uncased)		E: Copper slab G: Aluminum slab	1: Piston A: R-454B Non-bleed HP-A/C TXV B: R-32 Non-bleed HP-A/C TXV C: R-454B Bleed HP-A/C TXV	R: RDS Controller & Sensor (Factory Installed) L: Leak Detection Sensor (Factory Installed) N: Not Included (Field Installed)

\* See Spec Guide for additional nomenclature details





# SERVICE COILS



Scan the QR code  
to learn more



Perfect replacement for 8-12 SEER coils

Sized for legacy installations

Same features as rated coils

Embossed cabinets for universal furnace match

Supplied with pistons for both R-22 and R-410A application

## The Premier Replacement Coil for Any System

- Service coil for indoor coil replacement only; for new systems, please see our Premier Evaporator Coil product line
- Same features as rated coils
- Perfect replacement for 8–12 SEER coils
- Sized for legacy installations
- Supplied with pistons for both R-22 and R-410A applications
- Access port for easy TXV installation
- “No Hassle” 5-year warranty

## Nomenclature

S	24	R	145																								
Product Line	Nominal MBTUH	Configuration	Width/Height																								
S : Service Coil		R : Right Hand Upflow (CU) L : Left Hand Upflow (CU) H : Horizontal (AL) S : Horizontal Slab (CU) <i>(Multi-position option not available)</i>	<table><tr><th>Cased</th><th>Uncased</th><th>Horizontal</th><th>Slab</th></tr><tr><td>145 : 14.5"</td><td>130 : 13.0"</td><td>145 : 14.5"</td><td>187 : 18.75"</td></tr><tr><td>175 : 17.5"</td><td>140 : 14.0"</td><td>175 : 17.5"</td><td>227 : 22.75"</td></tr><tr><td>210 : 21.0"</td><td>155 : 15.5"</td><td>210 : 21.0"</td><td></td></tr><tr><td>245 : 24.5"</td><td>170 : 17.5"</td><td>245 : 24.5"</td><td></td></tr><tr><td></td><td>200 : 20.0"</td><td></td><td></td></tr></table>	Cased	Uncased	Horizontal	Slab	145 : 14.5"	130 : 13.0"	145 : 14.5"	187 : 18.75"	175 : 17.5"	140 : 14.0"	175 : 17.5"	227 : 22.75"	210 : 21.0"	155 : 15.5"	210 : 21.0"		245 : 24.5"	170 : 17.5"	245 : 24.5"			200 : 20.0"		
Cased	Uncased	Horizontal	Slab																								
145 : 14.5"	130 : 13.0"	145 : 14.5"	187 : 18.75"																								
175 : 17.5"	140 : 14.0"	175 : 17.5"	227 : 22.75"																								
210 : 21.0"	155 : 15.5"	210 : 21.0"																									
245 : 24.5"	170 : 17.5"	245 : 24.5"																									
	200 : 20.0"																										

\* See Spec Guide for additional nomenclature details

## Upflow Specifications

Model Number	Cased Width				Uncased Width				
	14.5"	17.5"	21"	24.5"	13"	14"	15.5"	17"	20"
S 24 (R,L)	X				X	X			
S 30 (R,L)	X	X			X	X	X		
S 36 (R,L)	X	X	X			X	X	X	
S 42 (R,L)		X	X				X	X	
S 48 (R,L)		X	X					X	X
S 60 (R,L)			X	X					X

## Piston Kit Sizes

MBTUH	R-22	R-410A
24	59	53
30	67	59
36	73	67
42	80	73
48	84	76
60	93	93

## Horizontal Specifications

Model Number	Horizontal			
	14.5"	17.5"	21"	24.5"
S 24 H	X			
S 36 H	X	X		
S 48 H		X	X	
S 60 H			X	X

## Horizontal Slab Specifications

Model Number	Low Profile 18.75" Slab			Standard 22.75" Slab			
	23"	27"	35"	23"	27"	35"	47"
S 24 S	X			X			
S 36 S		X			X		
S 48 S			X			X	
S 60 S			X				X



# NOTES

Lined area for taking notes, consisting of 20 horizontal lines.





2140 Lake Park Blvd, Richardson, TX 75080

**WWW.ADPNOW.COM**

**LinkedIn**



**Youtube**



**Facebook**



**Instagram**



©2026 Advanced Distributor Products, LLC. All rights reserved.

This information is the most current and accurate information available and is subject to change without notice. ADP makes no warranty or guarantee of any kind, express or implied, regarding the information set forth herein, including without limitation any warranty regarding its currency, accuracy or completeness or any warranty of merchantability or fitness for a particular purpose.