

UNIT HEATER
PRODUCT GUIDE



ADP unit heaters are engineered for maximum efficiency, increased reliability, and peak performance.

Each unit is newly designed for simplified installation with enhanced features.



04	WHY ADP?
05	THE ADP ADVANTAGE
06	UNIT HEATER APPLICATION
07	UNIT HEATER PRODUCT OFFERING
08	UNIT HEATER PRODUCT COMPARISON
09	RESIDENTIAL & LIGHT COMMERCIAL UHRS SERIES
09	Description
10	Nomenclature
11	SEPARATED COMBUSTION COMMERCIAL UNIT HEATER
11	Description
12	Nomenclature
13	COMMERCIAL UHCM SERIES
13	Description
14	Nomenclature

WHY ADP?

Advanced Distributor Products (ADP) started with a vision to produce the best evaporator coils in the country. In 1992, ADP began production in Grenada, Mississippi, and started developing innovative products that are fully supported by a research and development laboratory, which includes areas for testing, assembling, and designing future products.

Today, ADP offers a wide range of premier HVAC products with exclusive design advantages. We pride ourselves on our quality, flexibility, and solutions. We design our products to fit any application and simplify installation. And we're always open to new partnerships with businesses and the communities we serve.



QUALITY

- Leading US manufacturer of evaporator coils and air handlers
- Built to the highest quality standards
- Microban® antimicrobial technology
- Advanced performance testing and simulation software



FLEXIBILITY

- Broadest product line in the industry – thousands of variations available
- Products designed to match perfectly with any system
- Personalized programs for distributor partners
- Custom product strategies to meet local needs



SOLUTIONS

- Short lead times
- Low warranty rates with simple claim process
- Insights from industry experts
- Focused on distributor and dealer success
- Quick and easy installation in the field



THE ADP ADVANTAGE

ADP unit heaters are engineered for maximum efficiency, increased reliability, and peak performance. Each unit is newly designed for simplified installation with enhanced features.

ALL UNIT HEATERS OFFER:



Maximum efficiency
and increased
reliability



Patented heat
exchanger



Simplified
installation



Power exhaust allows heaters
to be vented vertically or
horizontally



Hinged access door allows for
easy access servicing



Direct drive propeller fans
dynamically balanced for
quiet and smooth operation

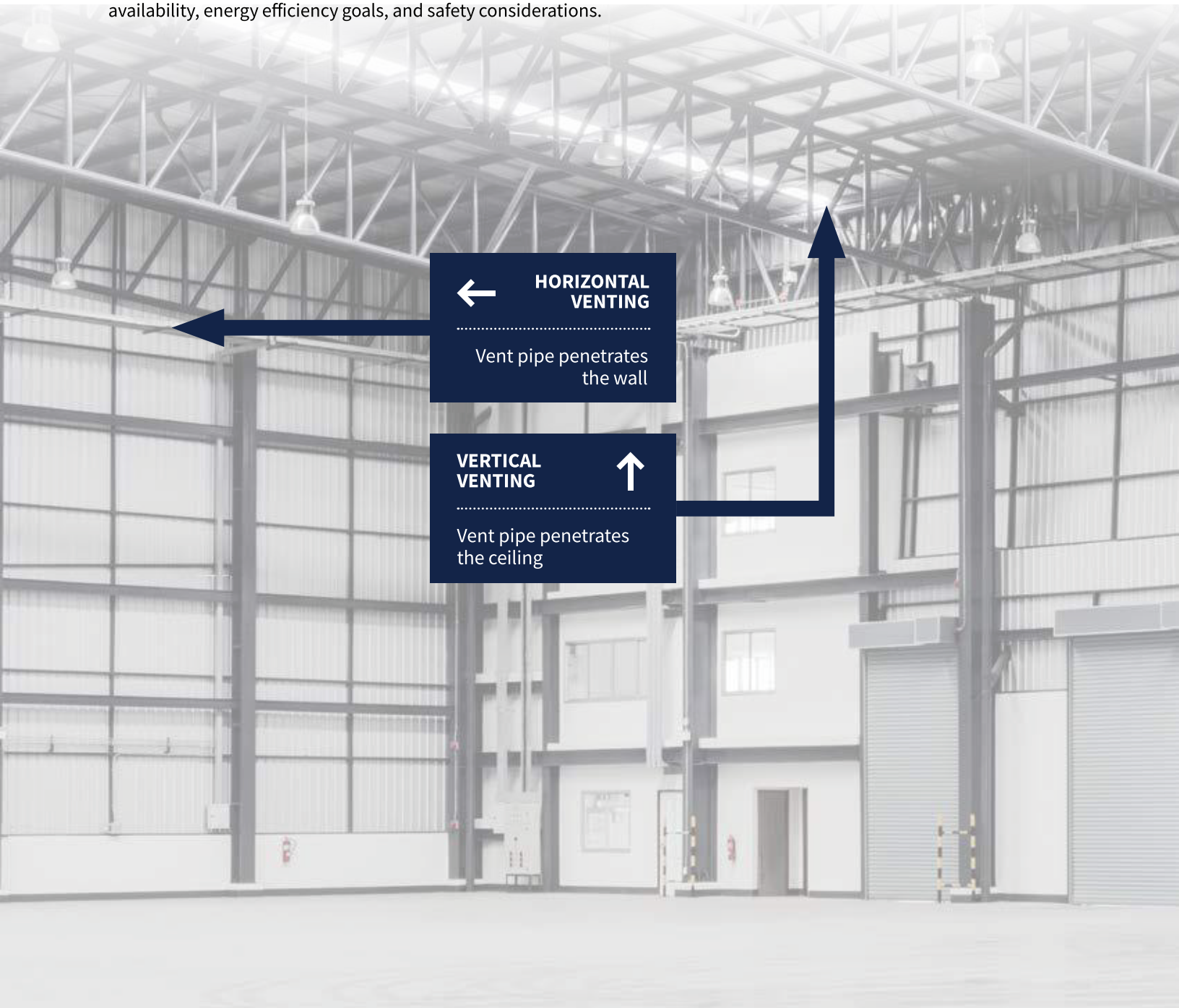


Patented Tubular Heat
Exchanger provides resistance
to corrosion and oxidation

UNIT HEATER APPLICATION

Unit heaters are heating devices designed for use in various residential, commercial, and industrial settings to provide efficient and cost-effective space heating. These heaters are known for their robust construction, reliability, and ability to deliver high levels of heat output. They are commonly used in warehouses, factories, garages, workshops, retail stores, and other large open spaces where a centralized heating system may not be practical or economical.

Commercial unit heaters are a versatile solution for providing reliable and effective heating in large spaces where other heating systems may not be as practical. Choosing the right unit heater depends on factors such as the size of the area, fuel availability, energy efficiency goals, and safety considerations.



HORIZONTAL VENTING

Vent pipe penetrates the wall

VERTICAL VENTING



Vent pipe penetrates the ceiling



UNIT HEATER PRODUCT OFFERING

Residential and Light Commercial
UHRS Series

Residential low profile unit heater – great for garages and shops



Commercial
UHCM Series

Commercial unit heater – great for warehouses and industrial businesses



Separated Combustion
UHSC Series

Separated Combustion commercial unit heater – used in automotive garages, manufacturing facilities, green house environments



STANDARD 2-YEAR
PARTS WARRANTY

AVAILABLE WARRANTY ON EXTENDED COMPONENTS:

AVAILABLE 10-YEAR
WARRANTY FOR ALUMINIZED HEAT EXCHANGERS

AVAILABLE 15-YEAR
WARRANTY FOR STAINLESS STEEL HEAT EXCHANGERS

**Scan this code to learn
more about our warranty
offering for Unit Heaters**



PARTSFINDER

SAVE TIME WITH ADP'S NEW PARTSFINDER

- Confirm part numbers
- Eliminate errors

UNIT HEATERS PRODUCT COMPARISON



SERIES	UHRS	UHCM	UHSC
DESCRIPTION	Residential & Light Commercial	Commercial	Separated Combustion
FUEL			
Natural Gas	✓	✓	✓
Liquid Propane	✓ *	✓ *	
HEAT EXCHANGER			
Aluminized Steel	✓	✓	✓
Stainless Steel		✓	✓
HEAT INPUT (MBTUH)			
30	✓ ○		
45	✓ ○		
60	✓ ○		
75	✓ ○		
90	✓ ○		
105	✓ ○		
125		✓	✓
150		✓	✓
175		✓	✓
200		✓	✓
250		✓	✓
300		✓	✓
350		✓	✓
400		✓	✓

✓ Available factory installed

★ Available field installed

○ Sizes are for residential application



Scan for more information
on our Unit Heaters





RESIDENTIAL & LIGHT COMMERCIAL UHRS SERIES

Scan the QR code to
learn more



Residential low profile unit heater great for garages and shops

Heating capacities from 30,000 – 105,000 BTUH

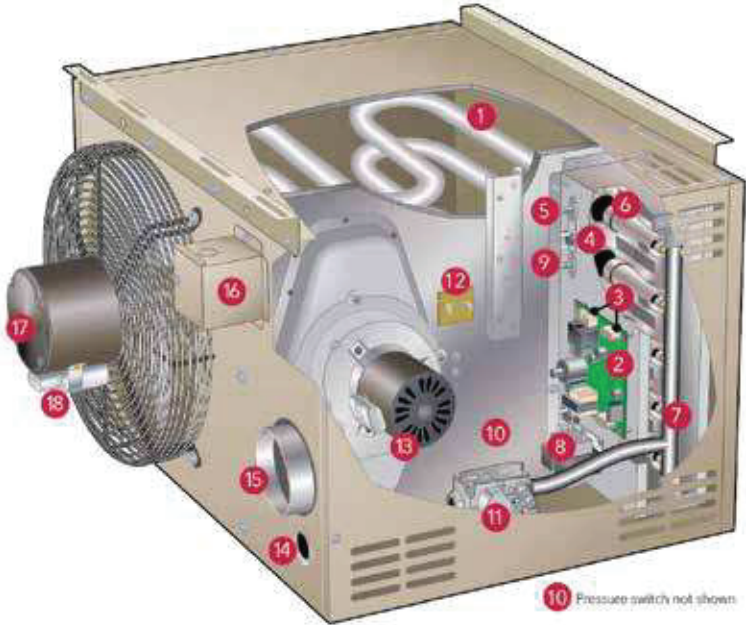
Up to 85% thermal efficiency

Power exhaust and patented aluminized heat exchanger

30% quieter than previous models providing quiet and smooth operation

Self-Diagnostic DSI Control Board improving troubleshooting and accuracy

Designed to Meet All of Your Heating Needs



- 1. **Dimpled Tubular Heat Exchanger** improves efficiency and increase durability
- 2. **DSI Control Board** offers many diagnostic codes to speed up installation and diagnostics
- 3. **Removable Thermostat and Power Connections** for speed of installation
- 4. **Flame Rollout Switches** improve safety
- 5. **Flame Sensor**
- 6. **Burner Cluster**
- 7. **Gas Manifold**
- 8. **24 V Transformer**
- 9. **Direct Spark Igniter** improves operation and efficiency
- 10. **Pressure Switch** verifies flue pipe is clear for safe operation
- 11. **24 V Gas Valve** with 100% safety shut off
- 12. **Primary Limit Switch**
- 13. **Combustion Air Inducer**
- 14. **Gas Inlet**
- 15. **Flue Outlet**
- 16. **Field Power Connection**
- 17. **Fan Motor**
- 18. **Capacitor**

10 Pressure switch not shown

Nomenclature

UH	RS	45	N	A	1
Series	Configuration	Nominal Input	Fuel Type	Heat Exchanger	Design Revision
UH: Unit Heater	RS: Residential/ Low profile	30 = 30,000 (BTUH) 45 = 45,000 (BTUH) 60 = 60,000 (BTUH) 75 = 75,000 (BTUH) 90 = 90,000 (BTUH) 105 = 105,000 (BTUH)	N: Natural Gas P: Propane	A: Aluminized	Blank = None 1: Revision #1 etc



SEPARATED COMBUSTION - UHSC

Scan the QR code to
learn more



Heating capacities from 125,000 – 400,000 BTUH

Heating Up to 82% thermal efficiency

Power exhaust and patented heat exchanger made of aluminized or stainless steel

30% quieter than previous models providing quiet and smooth operation

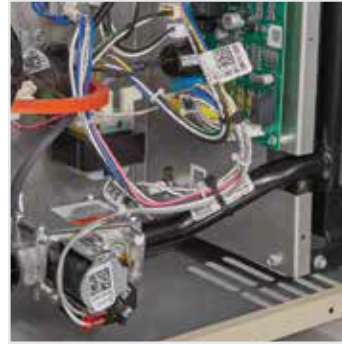
Self-Diagnostic DSI Control Board improving troubleshooting and accuracy

2-Stage operation for enhanced efficiency and system cycle reduction (UHCM 250-400 models)

Designed to Meet All of Your Heating Needs



DSI Control Board designed for easy servicing



Direct Spark Igniter improving operation and efficiency

Nomenclature

UH	CM	175	N	A	1
Series	Configuration	Nominal Input	Fuel Type	Heat Exchanger	Design Revision
UH: Unit Heater	SC = Separated Combustion	125 = 125,000 (BTUH) 150 = 150,000 (BTUH) 175 = 175,000 (BTUH) 200 = 200,000 (BTUH) 250 = 250,000 (BTUH) 300 = 300,000 (BTUH) 350 = 350,000 (BTUH) 400 = 400,000 (BTUH)	N: Natural Gas	A: Aluminized S: Stainless Steel	Blank = None 1: Revision #1 etc



COMMERCIAL – UHCM SERIES

Scan the QR code to
learn more



Heating capacities from 125,000 – 400,000 BTUH

Up to 85% thermal efficiency

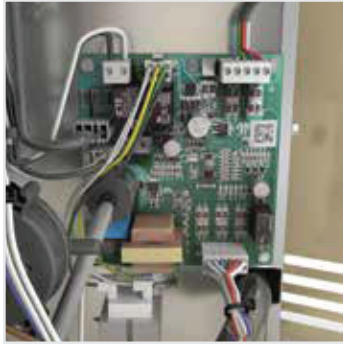
Power exhaust and patented heat exchanger made of aluminized or stainless steel

30% quieter than previous models providing quiet and smooth operation

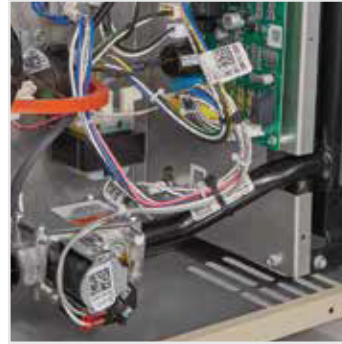
Self-Diagnostic DSI Control Board improving troubleshooting and accuracy

2-Stage operation for enhanced efficiency and system cycle reduction (UHCM 250-400 models)

Designed to Meet All of Your Heating Needs



DSI Control Board designed for easy servicing



Direct Spark Igniter improving operation and efficiency

Nomenclature

UH	CM	175	N	A	1
Series	Configuration	Nominal Input	Fuel Type	Heat Exchanger	Design Revision
UH: Unit Heater	CM: Commercial	125 = 125,000 (BTUH) 150 = 150,000 (BTUH) 175 = 175,000 (BTUH) 200 = 200,000 (BTUH) 250 = 250,000 (BTUH) 300 = 300,000 (BTUH) 350 = 350,000 (BTUH) 400 = 400,000 (BTUH)	N: Natural Gas P: Propane	A: Aluminized S: Stainless Steel	Blank = None 1: Revision #1 etc

Residential and light commercial applications





2140 Lake Park Blvd, Richardson, TX 75080

WWW.ADPNOW.COM

LinkedIn



YouTube



Facebook



Instagram

